



# Enterprise-Ready Manufacturing ERP

Built for Scalable, Intelligent & Custom Manufacturing  
Operations

# Modern Manufacturing Needs More Than a Standard ERP

Today's manufacturing landscape demands agility, intelligence, and seamless coordination across every operational touchpoint. Success requires systems that can adapt to complexity while maintaining efficiency.



## Dynamic Customer Demand

Rapid shifts in market requirements and customer expectations require real-time responsiveness and flexible production capabilities.



## Complex Production Planning

Multi-stage processes, resource optimization, and scheduling challenges demand sophisticated planning tools and visibility.



## Inventory & Procurement Coordination

Balancing material availability with capital efficiency while preventing stockouts and excess inventory buildup.



## Automation and Control

Minimizing manual intervention while maintaining oversight, quality standards, and operational discipline across workflows.

# Designed for Stability, Built for Custom Intelligence



## Our Approach

We believe enterprise systems should provide both rock-solid foundations and the flexibility to adapt to your unique business logic.

- **Stock-driven core** ensures reliable inventory management and traceability
- **Sales-triggered manufacturing** via intelligent configuration and automation rules
- **Modular architecture** scales with your growth and evolving requirements
- **Automation-first design** reduces manual effort while increasing accuracy

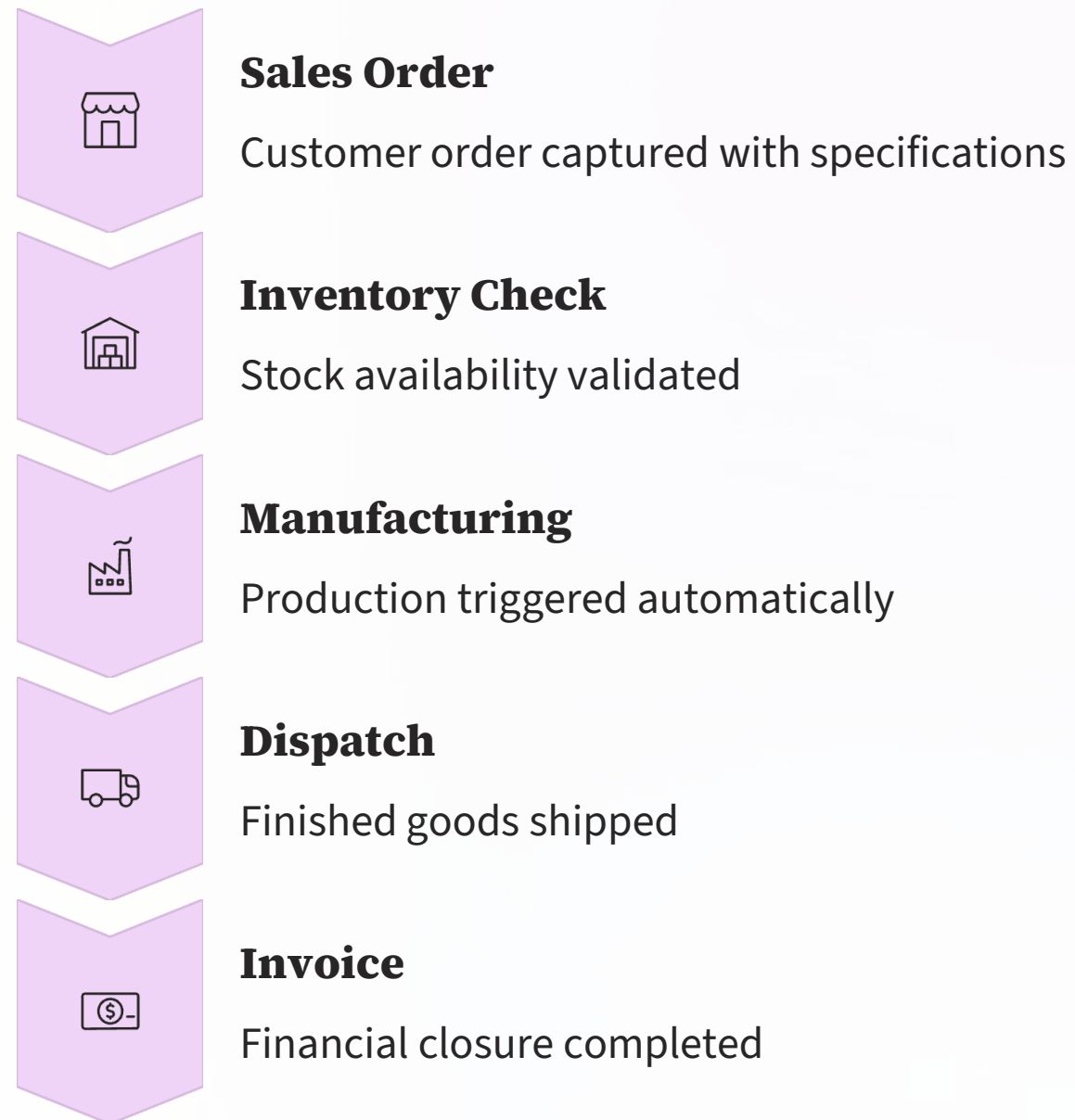
# Business Questions, Clearly Answered

Every critical manufacturing requirement is addressed through proven ERP capabilities, native functionality, or structured customization.

Business Requirement	ERP Capability
Sales to Manufacturing flow integration	✓ Automated triggering
Daily inventory tracking and control	✓ Real-time visibility
Smart procurement planning	✓ MRP & net calculation
Asset and RFID tracking	✓ Barcode/RFID support
Multi-warehouse management	✓ Native capability
Production shortage alerts	✓ Intelligent notifications
Overstocking prevention	✓ Rule-based controls

# End-to-End Sales to Manufacturing Integration

Experience seamless flow from customer order to final delivery, with full automation and traceability across every department and process stage.



# Real-Time Inventory Visibility

## Complete Stock Transparency

Gain instant visibility into every inventory movement, from receiving to dispatch, with comprehensive tracking capabilities that support modern manufacturing operations.

- **Live Stock Updates**

Real-time inventory positions across all locations and material types

- **Transaction Tracking**

GRN, material issues, inter-warehouse transfers, and dispatch fully logged

- **Barcode & RFID Support**

Modern scanning technology for accuracy and speed

- **Multi-Warehouse Ready**

Manage multiple locations with centralized visibility and control





# Automated Production Triggering

Transform sales orders into manufacturing directives automatically, ensuring production aligns perfectly with customer demand without manual intervention.

01

---

## Sales Order Confirmation

Order enters the system with customer requirements and delivery timeline

03

---

## Automation Rules Execute

Configured business rules trigger manufacturing order creation

02

---

## Make-to-Order Logic

System evaluates stock availability and production requirements

04

---

## Manufacturing Order Generated

Production team receives work orders with full specifications and linkage

# Material Requirement Planning Made Smart

## Intelligent Material Planning

Our BOM-based calculation engine provides precise material requirements, compares against available stock, and alerts planners to potential shortages before they impact production.

### **BOM Explosion**

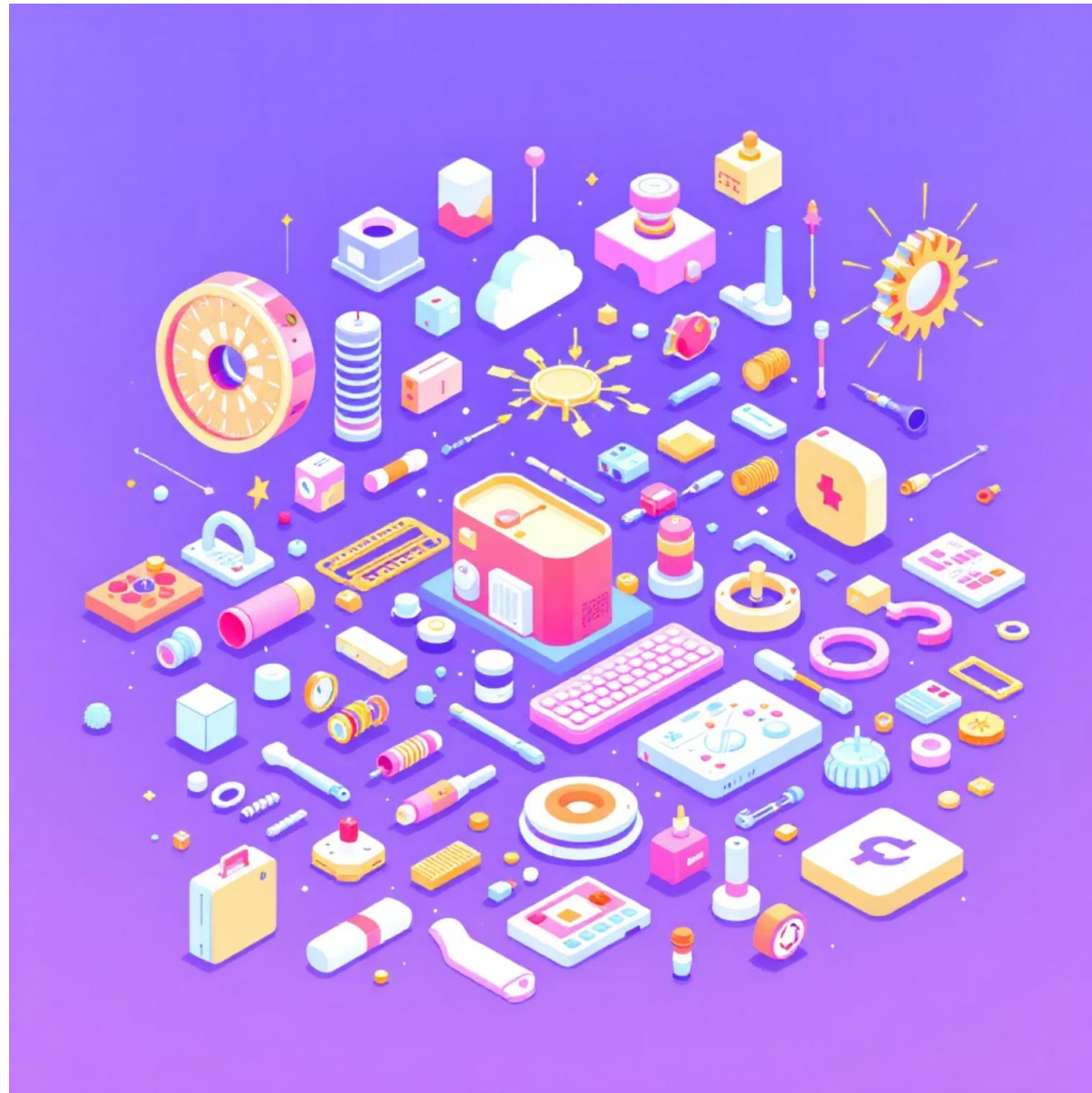
Automatically calculates raw material needs based on production orders and bill of materials structure

### **Stock Comparison**

Real-time analysis of required versus available inventory across all warehouses

### **Shortage Alerts**

Proactive notifications enable planners to take action before production delays occur



# Buy Only What Is Required

Optimize working capital through intelligent net procurement calculation that prevents over-purchasing while ensuring material availability for production schedules.

# 10

## Required Quantity

Total materials needed for confirmed production orders

# 2

## Available Stock

Current inventory on hand across all locations

# 8

## Net Purchase

Precise procurement quantity calculated automatically

This intelligent approach minimizes excess inventory carrying costs while maintaining production continuity and meeting customer commitments.



# Built-In Controls to Prevent Overstocking

Sophisticated inventory control mechanisms protect your working capital by preventing unnecessary stock accumulation through rule-based validation and approval workflows.

## Maximum Stock Levels

Configure threshold limits for each material based on consumption patterns and storage capacity

## Incoming Stock Validation

System validates current inventory plus incoming orders against defined maximum levels

## Exception Workflows

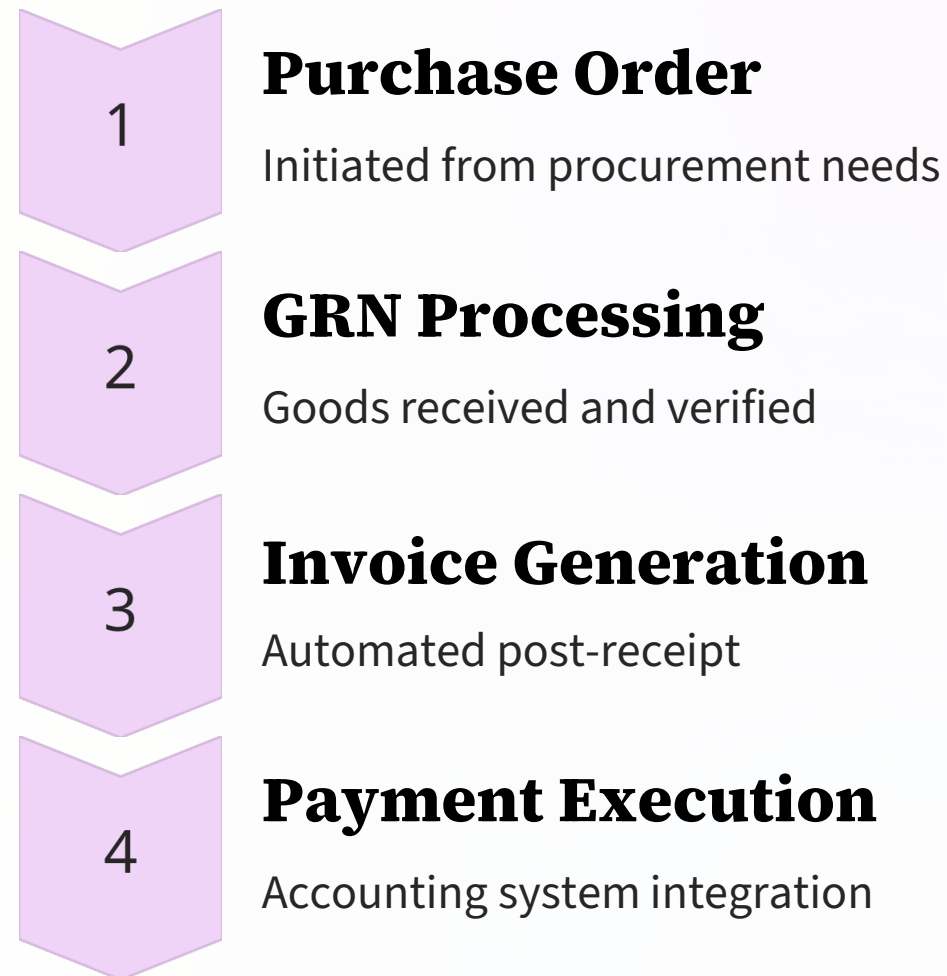
Structured approval processes for purchases that exceed normal parameters with justification tracking



- ❑ **Result:** Maintain optimal inventory levels, reduce carrying costs, and improve cash flow while ensuring production continuity.

# Seamless Finance & Invoicing Flow

Complete financial integration ensures every transaction flows seamlessly from procurement through payment, with full traceability and automated accounting system synchronization.



Sales invoicing triggers automatically after dispatch confirmation, ensuring accurate revenue recognition and eliminating manual entry errors across your financial systems.



# Complete Asset Lifecycle Management

Track and manage every asset from acquisition to retirement with comprehensive visibility into location, status, maintenance history, and utilization across your enterprise.

Suitable for IT equipment, plant machinery, vehicles, and facilities infrastructure with full audit trail capabilities.

01

---

## Asset Registration

Capture details, specifications, and ownership data at acquisition

03

---

## Maintenance Management

Schedule preventive maintenance and track service history

02

---

## Active Tracking

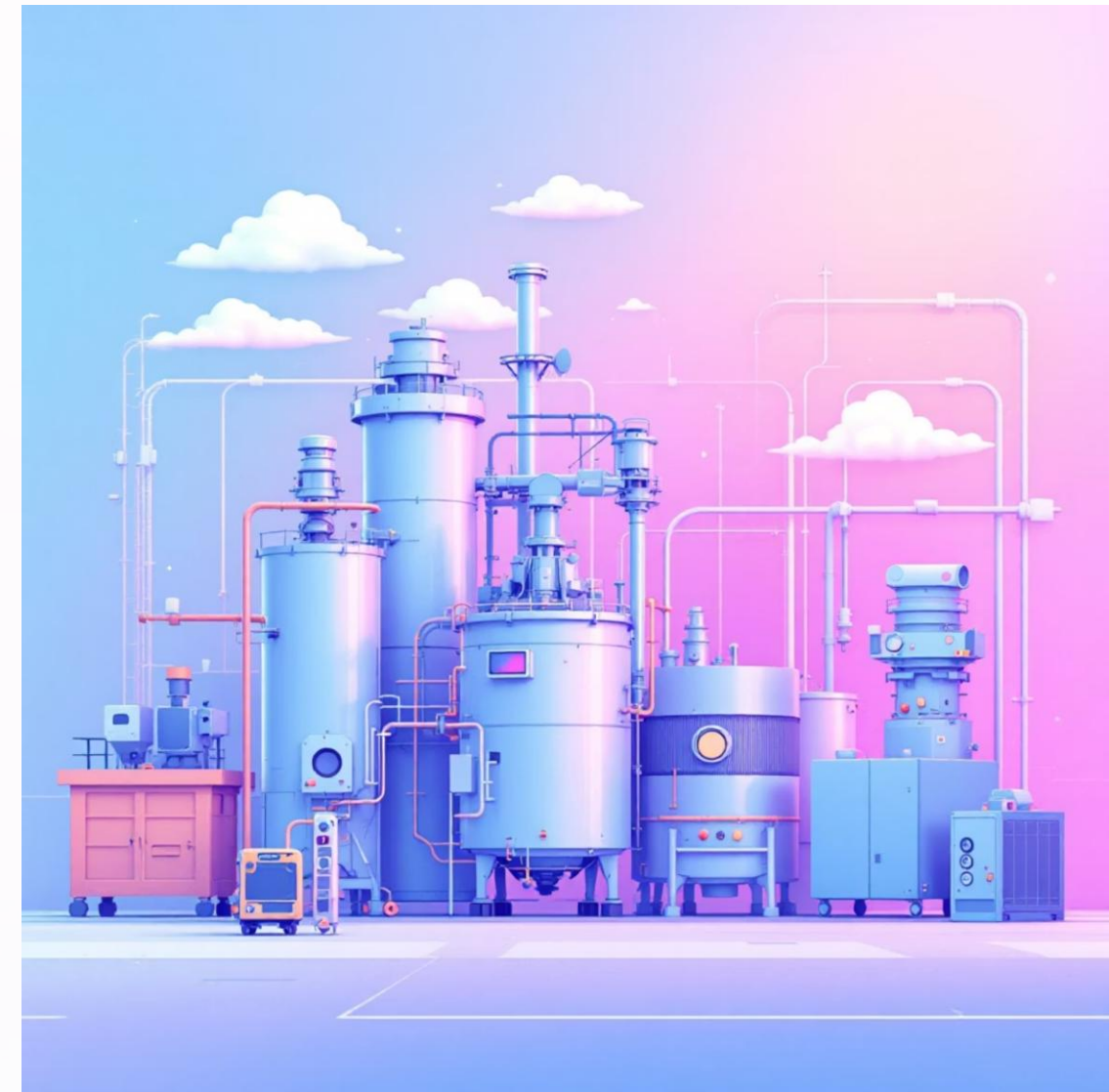
Monitor location, status, assignments, and movement in real-time

04

---

## Disposal & Retirement

Manage end-of-life processes with full compliance documentation



# RFID-Enabled Smart Asset Tracking



## RFID Asset Tags

Durable tags for equipment identification and automated tracking



## Multi-Reader Support

Handheld and fixed readers for flexible scanning capabilities



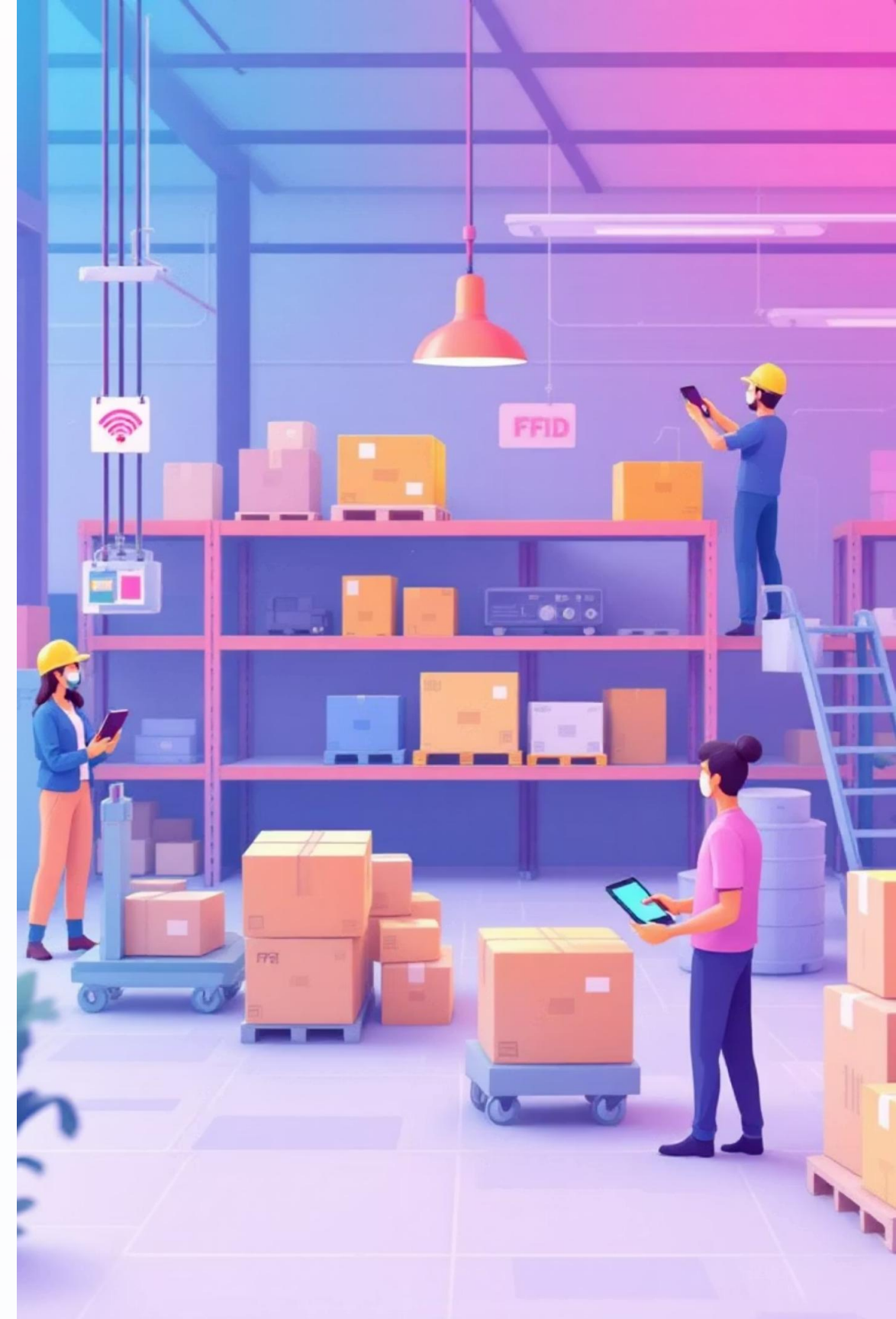
## Rapid Verification

Complete asset audits in minutes instead of days



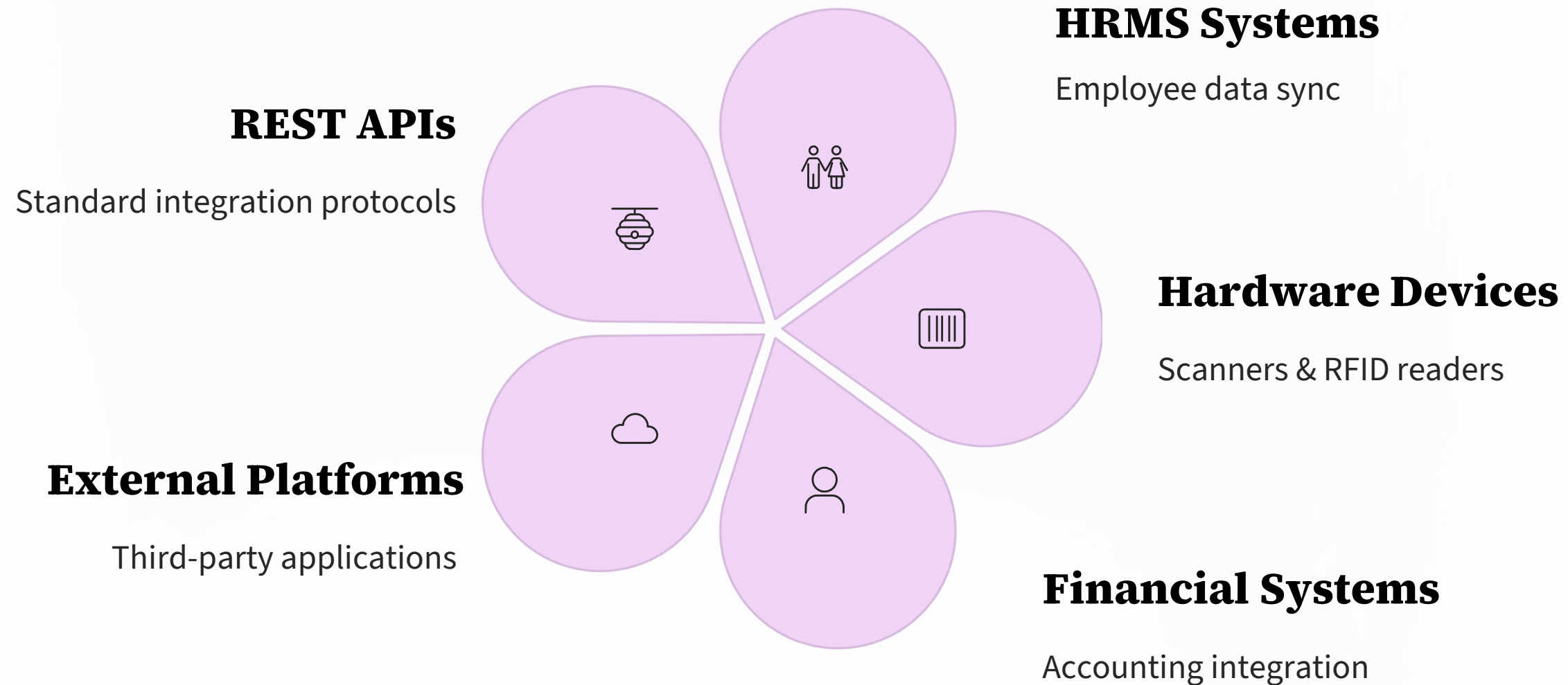
## Live Asset Visibility

Real-time location and status updates across all facilities

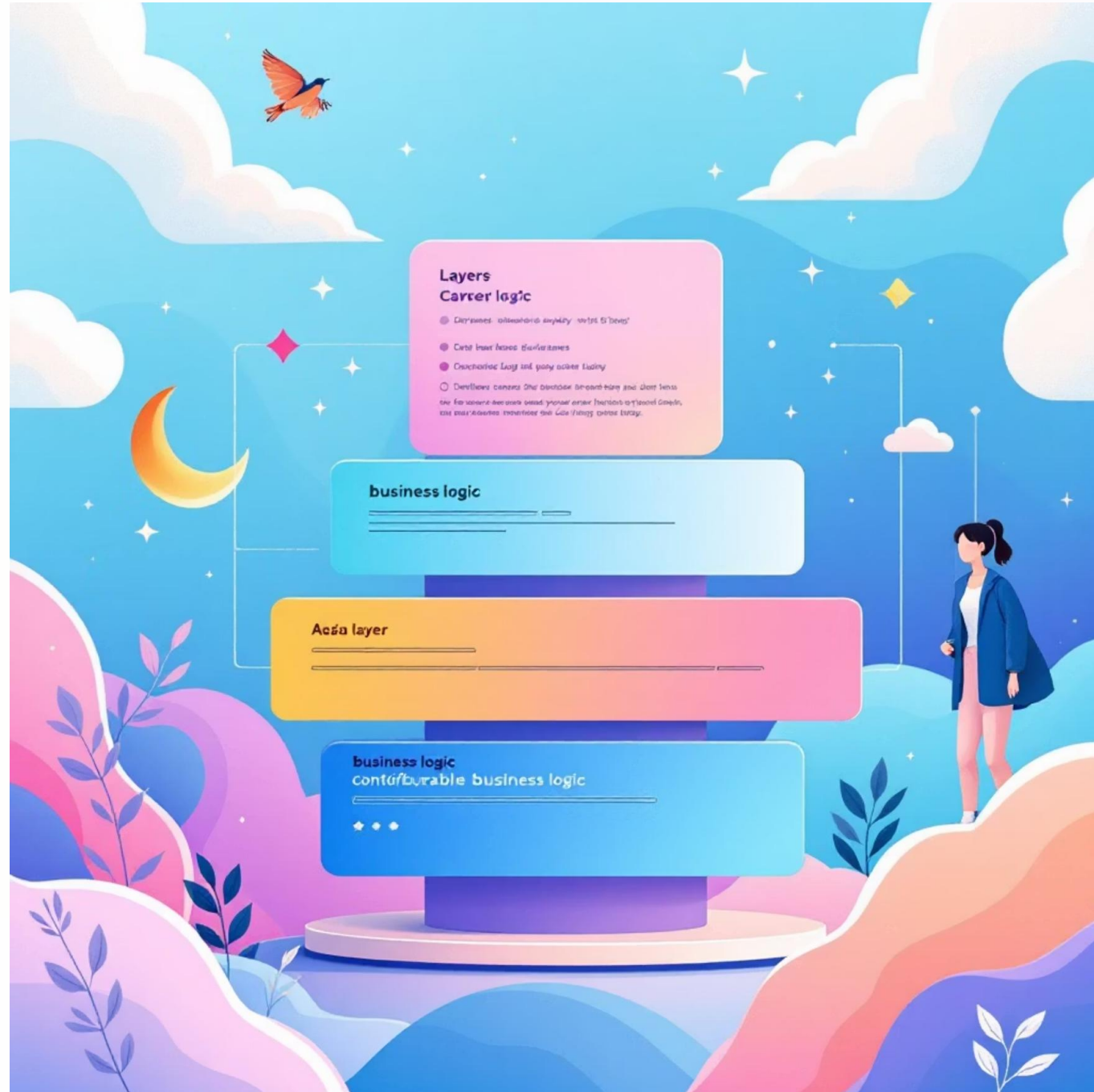


# Built to Integrate, Easy to Extend

Modern REST API architecture enables seamless connectivity with your existing technology ecosystem. Connect ERP, HRMS, IoT devices, scanners, and third-party systems without disrupting operations.



# Customization Done the Right Way



Business-rule driven automation that adapts to your unique processes while maintaining system stability and upgrade compatibility.

Configure workflows, approval chains, and business logic without compromising the core ERP foundation.

## **Business Rule Engine**

Configure complex workflows and approval processes without custom code

## **Core Stability Protected**

Configuration layer isolated from core system to prevent instability

## **Upgrade-Safe Configuration**

Customizations preserved through system updates and version upgrades

## **Process-Aligned Design**

Tailor the system to match your established business processes



# Why Enterprises Choose Our ERP

## **Manufacturing-Focused Design**

Built specifically for production environments with deep domain expertise embedded in every module

## **Flexible & Scalable Architecture**

Grows with your business from single-site operations to multi-facility global enterprises

## **Proven Automation Approach**

Demonstrated track record of reducing manual work and increasing operational efficiency

## **Future-Ready Platform**

Prepared for increasing complexity, new technologies, and evolving business requirements

An ERP that adapts to your business – not the other way around

# Strategic Implementation Approach

Our phased implementation methodology minimizes disruption while delivering rapid value. Each phase builds on proven success before expanding scope.

## Phase 1: Foundation

Core modules, data migration, user training

1

## Phase 3: Integration

System connections, extended capabilities

3

## Phase 2: Optimization

Process refinement, automation enablement

2

## Phase 4: Innovation

Advanced features, continuous improvement

4



## Dedicated Support Throughout

Experienced implementation team with manufacturing domain expertise guides you from planning through go-live and beyond.

Post-implementation support ensures sustained success and continuous optimization.



# Measurable Business Impact

Organizations leveraging our ERP platform report significant improvements across key operational metrics within the first year of deployment.

**45%**

### **Inventory Reduction**

Lower carrying costs through optimized stock levels

**60%**

### **Faster Reporting**

Real-time insights replace manual data compilation

**30%**

### **Lead Time Decrease**

Streamlined processes accelerate order fulfillment

**85%**

### **Process Accuracy**

Automation eliminates manual entry errors

These improvements translate directly to bottom-line impact through reduced waste, increased throughput, and enhanced customer satisfaction.

# Security & Compliance Built-In

Enterprise-grade security architecture protects your critical business data while maintaining compliance with industry regulations and standards.



## Role-Based Access Control

Granular permissions ensure users access only relevant data and functions



## Complete Audit Trails

Every transaction logged with user, timestamp, and change history



## Data Encryption

At-rest and in-transit encryption protects sensitive information



## Regulatory Compliance

Built-in support for SOX, FDA, ISO quality standards



# Ready to Transform Your Operations?

Partner with a proven ERP platform designed for manufacturing excellence. Our solution combines deep industry expertise with modern technology to drive sustainable competitive advantage.



## Schedule a Demo

See the platform in action with your specific use cases



## Download Resources

Access detailed capability briefs and case studies



## Consult Our Team

Discuss your requirements with our experts

- 📌 **Next Steps:** Contact our team to begin your digital transformation journey. We'll work with you to understand your unique challenges and design a solution that delivers measurable results.

